

LOKI



DISTINCTIVE FEATURES AND CLEAN LINES

LOKI is created with an elegant and functional design that integrates seamlessly with the architecture of the room. The series is characterized by a clean and simple design language that harmonizes with elements such as windows, doors, and walls.

The series includes a complete product range in the same design, making it possible to create a cohesive solution that is also pleasing to the eye.

Repetition is the key word in this award-winning series. The long, distinctive groove on the front plate connects the products and creates visual harmony when multiple LOKI products are installed side by side.

The products are touch-free, safe, and intuitive, designed to operate flawlessly even in the busiest restroom environments — around the clock.



There are places where
people stay for moment.
And where the design must
perform every single second

HAND DRYER

- Powder coated stainless steel
- PVD coating available
- Touch-free warm-air hand dryer with IR sensor
- Drying cycle of 10-15 sec.
- Adjustable sensor, motor speed and heating
- 5-year warranty

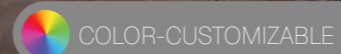
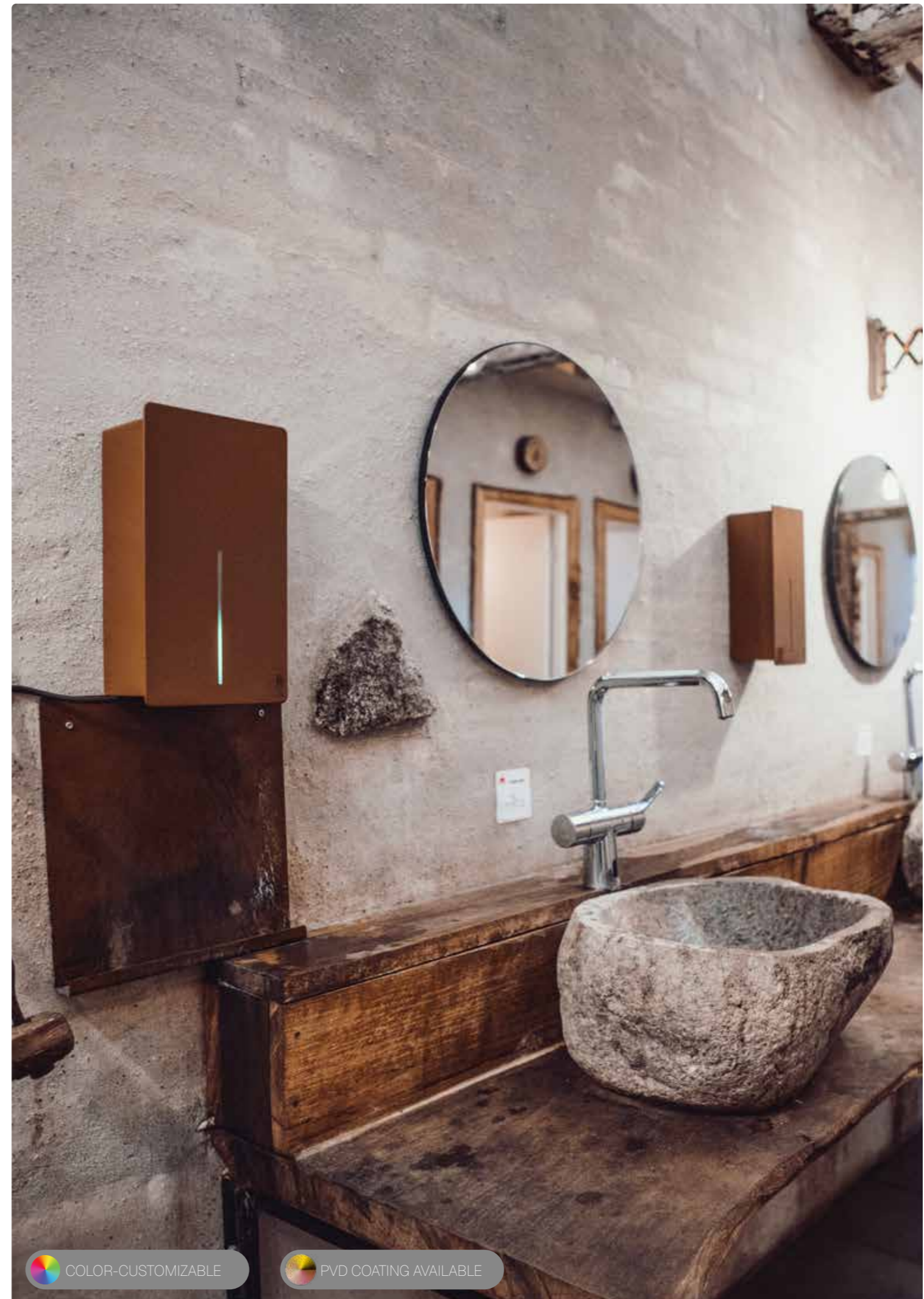


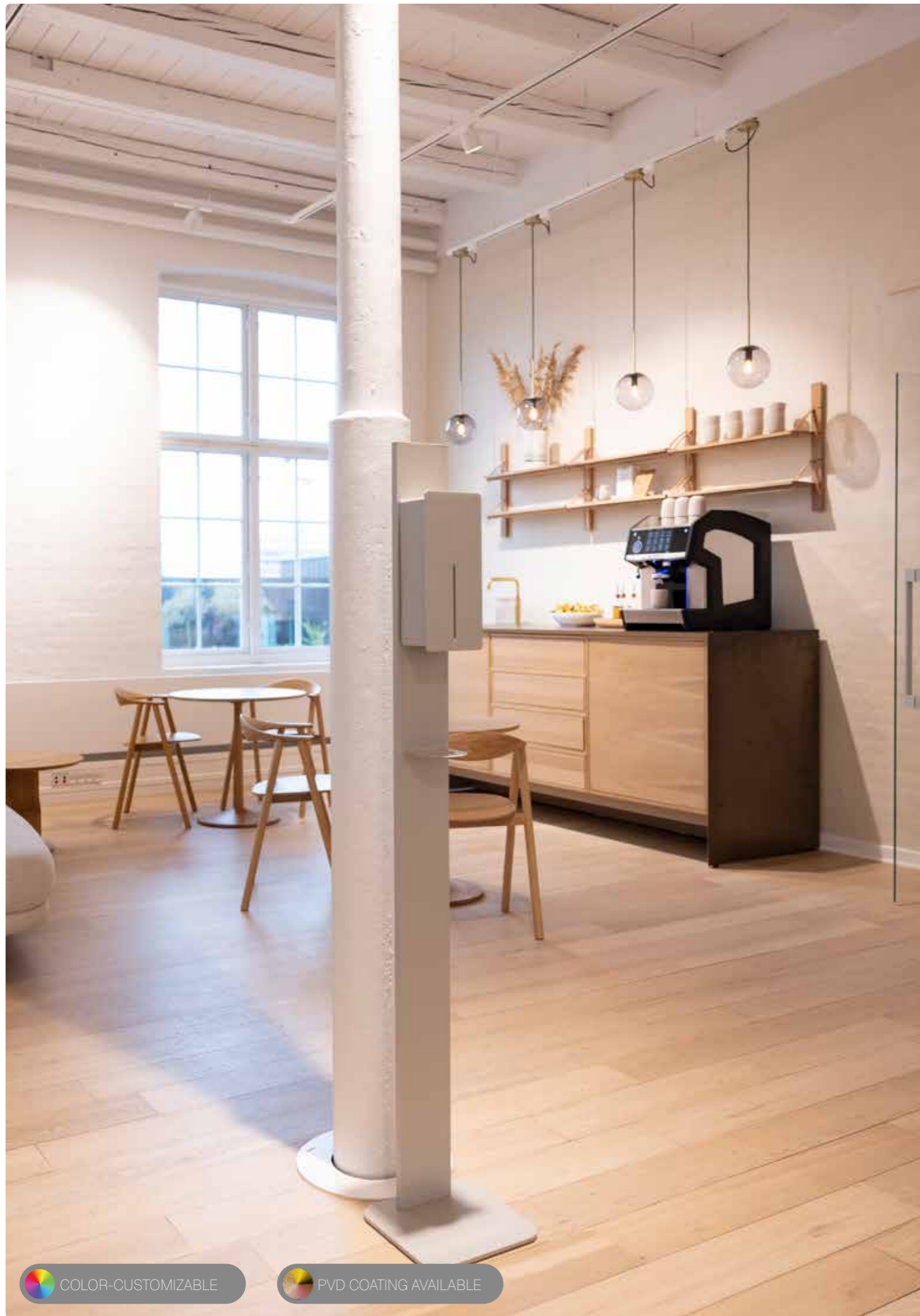
SPECIFICATIONS

Color:
Matt black - RAL 9005
Classic white - RAL 9003
Optional in any classic RAL color
PVD coating available

Dimensions:
H: 11.81"
B: 6.81"
D: 4.01"

Sound level:
69-76,6 dBA @ 1 m





DISPENSERS

Touch-free

- Powder coated stainless steel
- PVD coating available
- 0.22 gal = 800-975 doses
- Available for foam soap, liquid soap, and disinfectant
- Refillable container
- Drip tray not included
- 2 year warranty

Manual

- Powder coated stainless steel
- PVD coating available
- 0.15 gal = 850 doses
- Available for foam soap, liquid soap, and disinfectant
- Refillable container
- Drip tray not included
- 2 year warranty



COLOR-CUSTOMIZABLE

PVD COATING AVAILABLE

| SPECIFICATIONS | |
|---------------------------------------------------------------------------------------------------------------------------|---------------------------------------------------------------------------------------------------------------------------|
| Touch-free dispenser | Manual dispenser |
| Color: Matt black - RAL 9005 Classic white - RAL 9003 Optional in any classic RAL color PVD coating available | Color: Matt black - RAL 9005 Classic white - RAL 9003 Optional in any classic RAL color PVD coating available |
| Dimensions: H: 11.81" B: 5.15" D: 3.93" | Dimensions: H: 12.91" B: 5.15" D: 4.52" |



reddot winner 2021



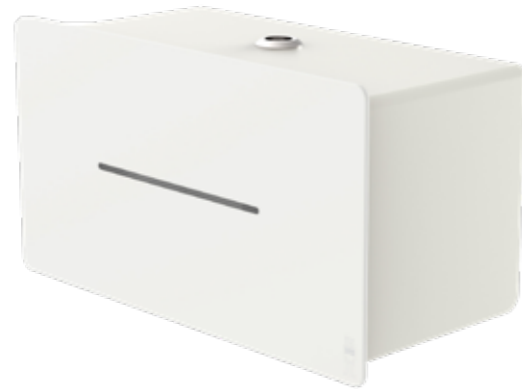
TOILET ROLL HOLDERS

Double

- Powder coated stainless steel
- PVD coating available
- Capacity: 2 standard size paper rolls
- Ideal for low to medium traffic washrooms
- The paper refill level is visible through the front cover
- 2-year warranty

Jumbo

- Powder coated stainless steel
- PVD coating available
- Capacity: 1 jumbo roll
- Ideal for high-traffic restrooms
- The paper refill level is visible through the front cover
- 2-year warranty



SPECIFICATIONS

Double

Color:
 Matt black - RAL 9005
 Classic white - RAL 9003
 Optional in any classic RAL color
 PVD coating available

Dimensions:
 H: 6.33"
 B: 11.81"
 D: 5.47"

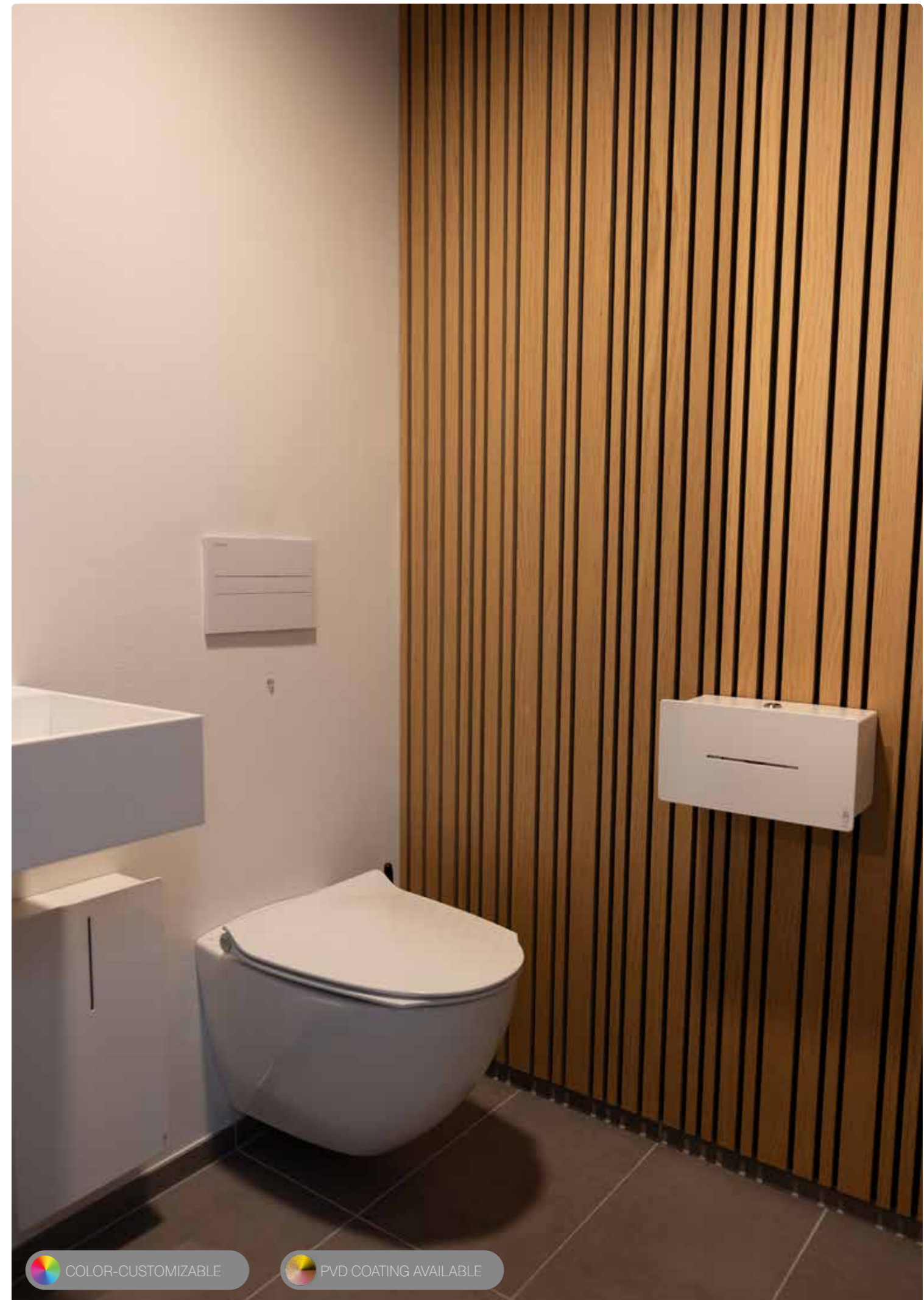
Jumbo

Color:
 Matt black - RAL 9005
 Classic white - RAL 9003
 Optional in any classic RAL color
 PVD coating available

Dimensions:
 H: 14.56"
 B: 14.56"
 D: 4.80"



reddot winner 2021



COLOR-CUSTOMIZABLE

PVD COATING AVAILABLE



COLOR-CUSTOMIZABLE

PVD COATING AVAILABLE

PAPER TOWEL DISPENSERS

- Powder coated stainless steel
- PVD coating available
- Fits z-folded paper towels
- The paper refill level is visible through the front cover
- 2-year warranty



WASTE BINS

- Powder coated stainless steel
- PVD coating available
- Capacity: 6.07 gal
- Open throw-in
- Interior bag holder
- 2-year warranty

- Powder coated stainless steel
- PVD coating available
- Capacity: 7.92 gal
- Open throw-in
- Interior bag holder
- 2-year warranty



| SPECIFICATIONS | | |
|---------------------------------------------------------------------------------------------------------------------------|---------------------------------------------------------------------------------------------------------------------------|---------------------------------------------------------------------------------------------------------------------------|
| Paper towel dispenser | Waste bin, 6.07 gal | Waste bin, 7.92 gal |
| Color: Matt black - RAL 9005 Classic white - RAL 9003 Optional in any classic RAL color PVD coating available | Color: Matt black - RAL 9005 Classic white - RAL 9003 Optional in any classic RAL color PVD coating available | Color: Matt black - RAL 9005 Classic white - RAL 9003 Optional in any classic RAL color PVD coating available |
| Dimensions: H: 11.81" B: 11.81" D: 3.93" | Dimensions: H: 20.86" B: 11.81" D: 7.08" | Dimensions: H: 24.80" B: 11.81" D: 7.67" |



reddot winner 2021

The soap dispenser and
hand dryer should work.
Even after thousands of hands

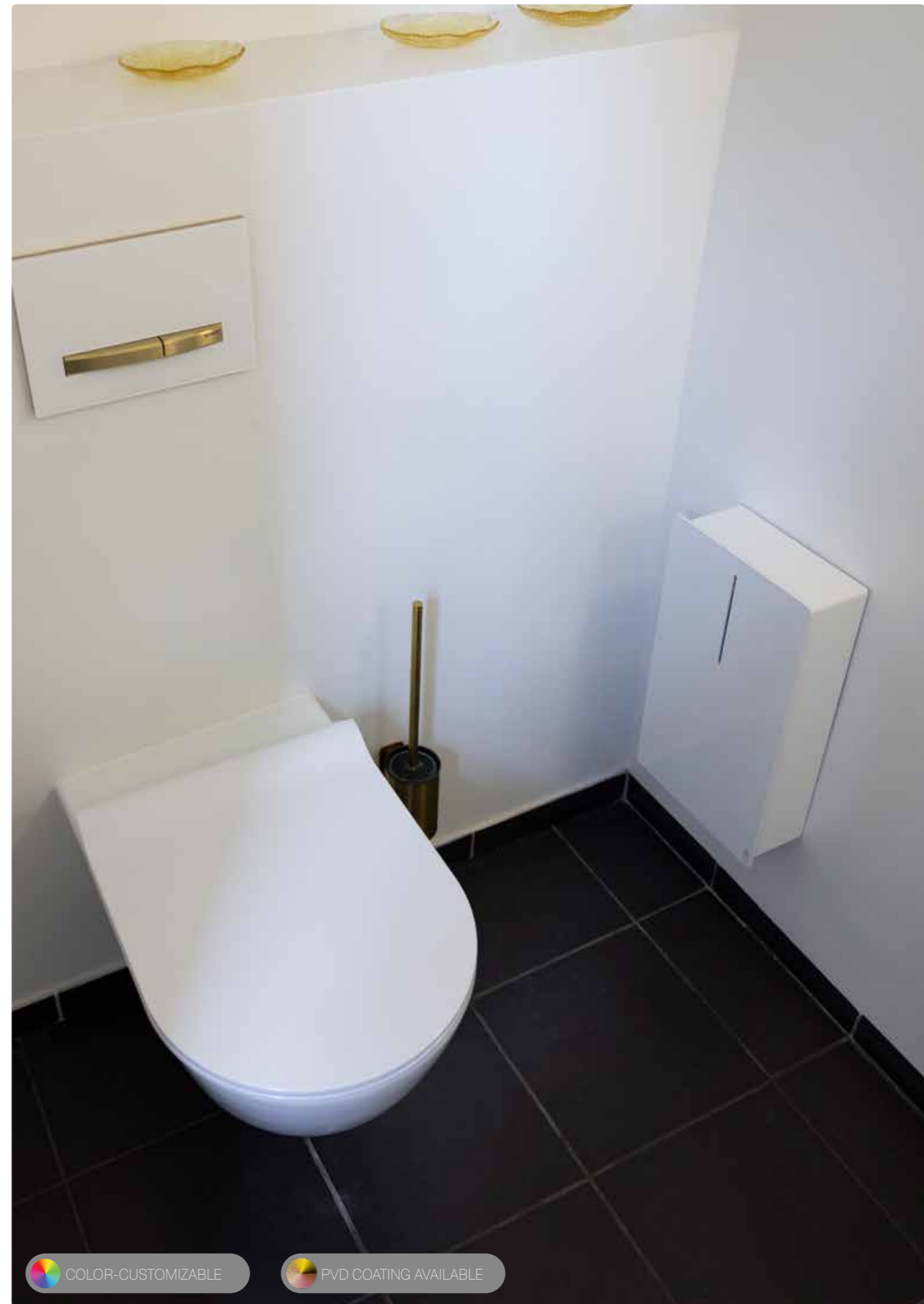
Hygiene solutions
— designed to be used



SANITARY BINS

- Powder coated stainless steel
- PVD coating available
- Capacity: 0.79 gal
- Pivoting front plate
- Interior bag holder
- 2-year warranty

- Powder coated stainless steel
- PVD coating available
- Capacity: 2.90 gal
- Pivoting front plate
- Interior bag holder
- 2-year warranty



SPECIFICATIONS

Sanitary bin, 0.79 gal

Color:
 Matt black - RAL 9005
 Classic white - RAL 9003
 Optional in any classic RAL color
 PVD coating available

Dimensions:
 H: 11.81"
 B: 6.81"
 D: 3.93"

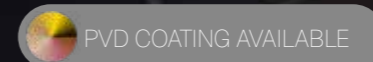
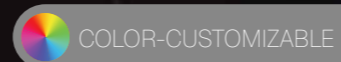
Sanitary bin, 2.90 gal

Color:
 Matt black - RAL 9005
 Classic white - RAL 9003
 Optional in any classic RAL color
 PVD coating available

Dimensions:
 H: 17.55"
 B: 9.84"
 D: 4.01"



reddot winner 2021





 COLOR-CUSTOMIZABLE

MIRROR

- Powder coated stainless steel
- Versatile hanging options. Horizontally or vertically
- Suited for entryways, bedrooms, or bathrooms
- Can be combined with all product lines: BJÖRK, LOKI, TAPS, and STAINLESS DESIGN
- 2-year warranty

| SPECIFICATIONS |
|--------------------------------------------------------------------------------------------------|
| Color: Matt black — RAL 9005 Classic white — RAL 9003 Optional in any classic RAL color |
| Dimensions: H: 39.37" B: 19.68" |



GRAB BARS

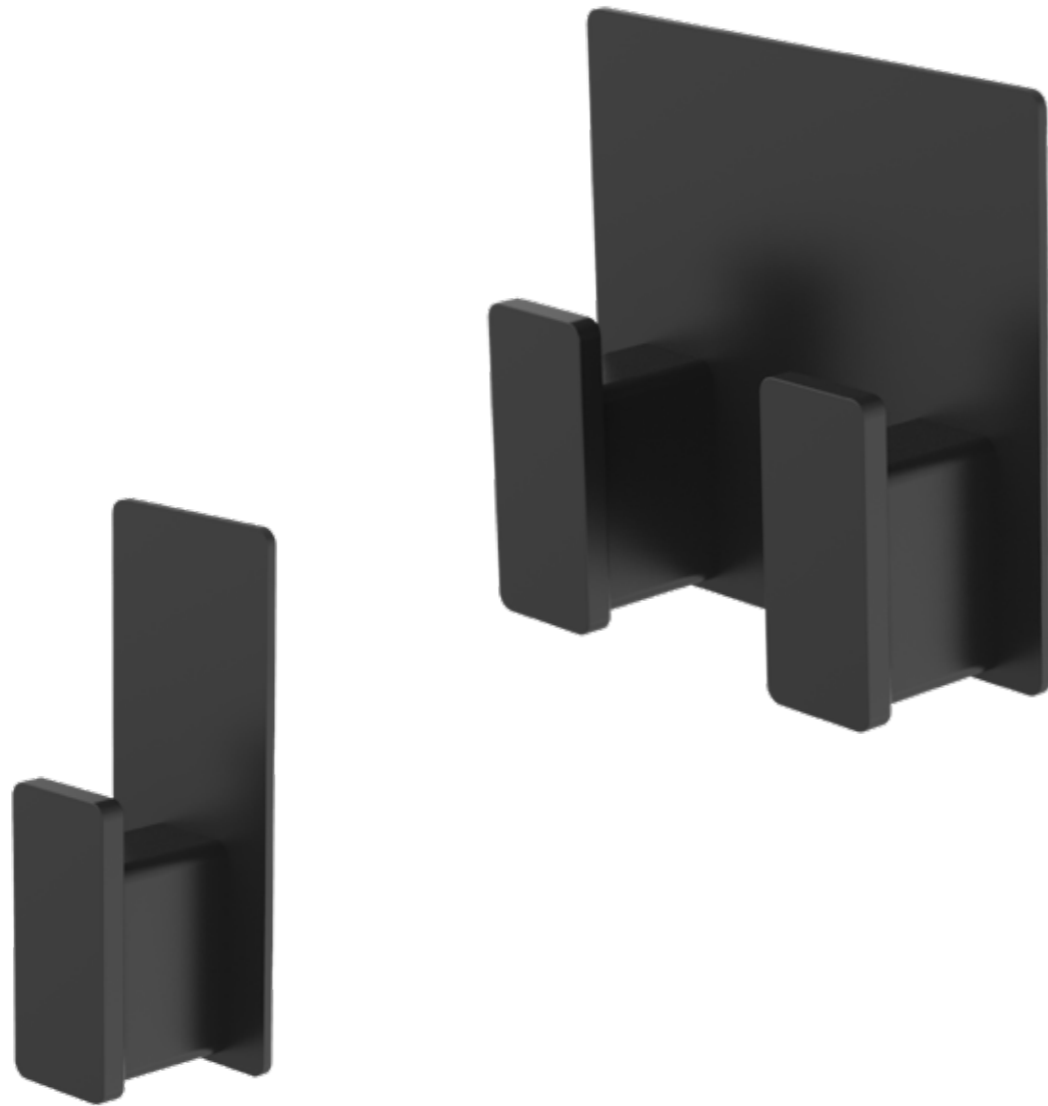
- Powder coated stainless steel
- 4 sizes
- Enhance and ensure accessibility and stability for everyone
- Can be combined with all product lines: BJÖRK, LOKI, TAPS, and STAINLESS DESIGN
- 2-year warranty

| SPECIFICATIONS |
|---------------------------------------------------------------------------------------------------------------------|
| Color: Stainless steel Matt black — RAL 9005 Classic white — RAL 9003 Optional in any classic RAL color |
| Dimensions: L: 18", 24", 36", 42" H: Ø1.26" |



HANGERS

- Powder coated stainless steel
- Available in 2 sizes; single or double
- Suited for offices, entryways, bedrooms, or bathrooms
- Back-to-back mounting option
- 2-year warranty



SPECIFICATIONS

Single hanger

Color:
Matt black — RAL 9005
Classic white — RAL 9003
Optional in any classic RAL color

Dimensions:
H: 3.93"
B: 1.57"
D: 1.29"

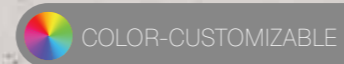
Double hanger

Color:
Matt black — RAL 9005
Classic white — RAL 9003
Optional in any classic RAL color

Dimensions:
H: 3.93"
B: 4.21"
D: 1.29"

Back-to-back-mounting

The products can be mounted
back-to-back on both sides of a wall.

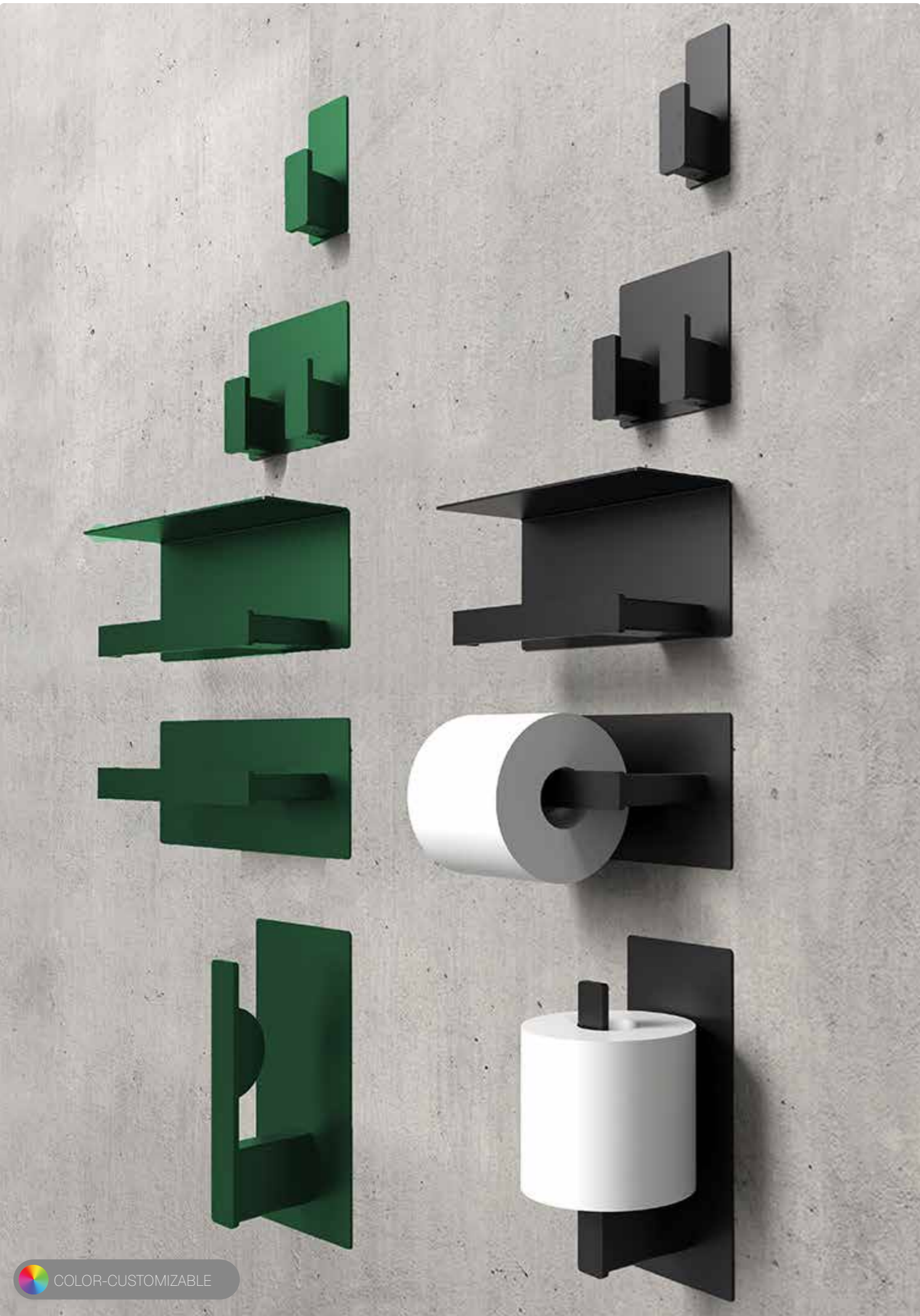
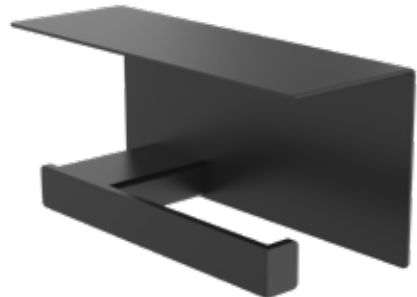
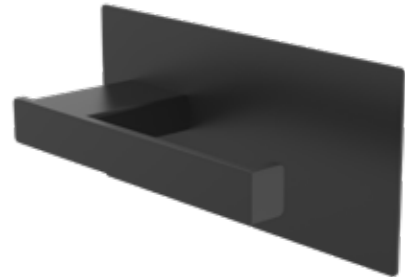


TOILET ROLL HOLDERS

- Powder coated stainless steel
- Standard toilet roll holder
- Capacity: 1 standard size paper roll
- Available as right- and left-oriented
- Ideal for low to medium traffic restrooms
- Back-to-back mounting option
- 2-year warranty

- Powder coated stainless steel
- Standard toilet roll holder with shelf
- Capacity: 1 standard size paper roll
- Available as right- and left-oriented
- Ideal for low to medium traffic washrooms
- Back-to-back mounting option
- 2-year warranty

- Powder coated stainless steel
- Spare roll holder
- Capacity: 1 standard size paper roll
- Ideal for low to medium traffic washrooms
- Back-to-back mounting option
- 2-year warranty



COLOR-CUSTOMIZABLE

| SPECIFICATIONS | | |
|--------------------------------------------------------------------------------------------------|--------------------------------------------------------------------------------------------------|--------------------------------------------------------------------------------------------------|
| Standard toilet roll holder | Standard toilet roll holder with shelf | Spare roll holder |
| Color: Matt black — RAL 9005 Classic white — RAL 9003 Optional in any classic RAL color | Color: Matt black — RAL 9005 Classic white — RAL 9003 Optional in any classic RAL color | Color: Matt black — RAL 9005 Classic white — RAL 9003 Optional in any classic RAL color |
| Dimensions: H: 8.66" B: 3.93" D: 3.03" | Dimensions: H: 8.66" B: 3.93" D: 3.03" | Dimensions: H: 8.66" B: 3.93" D: 3.03" |

BACT-TO-BACK MOUNTING

The back-to-back mounting option is a smart and space-saving solution that maximizes efficiency and optimizes the utilization of available space.

By mounting products on both sides of a wall you get numerous advantages.

Space is a valuable commodity in any environment, whether it's a public or commercial space. The back-to-back mounting option allows for the consolidation of products on a single wall, effectively doubling the functionality without occupying additional space. This is particularly beneficial in compact areas where every inch counts.

Moreover, this mounting method damages the walls less and enhances the aesthetics of the space by eliminating clutter and providing a clean and streamlined appearance.

With products neatly arranged on both sides of the wall, the overall visual impact is organized and visually appealing. This not only contributes to a more polished and professional look but also creates a more pleasant and conducive environment.



DAN DRYER A/S
Tåsingevej 2
DK - 8940 Randers SV

+45 8641 5711
info@dandryer.com
dandryer.us

